

3/2019

Primary Health Care
<http://www.bristol.ac.uk/primaryhealthcare>



@capcteaching

Teaching Newsletter

Bristol Medical School, 1st Floor, 5 Tyndall Avenue, Bristol, BS8 1UD
Tel: 0117 42 82987
phc-teaching@bristol.ac.uk

Working in a remote location?

Check out the **NATIONAL CENTRE FOR REMOTE AND RURAL MEDICINE** and their inaugural national conference in June 2019. More info here <https://www.ncrrm.co.uk/news-events/>

GP Teacher Workshops for 2019

New GP Teachers	2nd April	Canyngge Hall	9.00-13.00
N. Bristol Academy	3rd April	Southmead Hosp.	19.00-21.00
Year 3 GP Teachers	9th July	Frogmary Green Farm, Somerset	13.30-17:00
Year 3 GP Teachers	16th July	Cirencester Football Club	13.30-17.00
Year 3 GP Teachers	10th Sept.	Engineers' Hse, Bristol	9.00-17.00
Year 1&2 GP Tutors	12th Sept.	Engineers' Hse, Bristol	9.00-15.00
Year 1&2 EC Tutors	17th Sept.	Engineers' Hse, Bristol	9.00-15.00
Year 4 GP Teachers	8th Oct.	Engineers' Hse, Bristol	9.00-17.00
Year 5 GP Teachers	5th Nov.	Engineers' Hse, Bristol	9.00-17.00

To book any of these workshops, please email phc-teaching@bristol.ac.uk.

RCGP Severn Faculty Gala Dinner and talk 7th June. Don't miss Dr Marian Davis, GP, talking about **Adolescents' health in vulnerable populations**

For more details see the flyer on page 5

CAPC research newsletter <https://mailchi.mp/62a6f7a78857/phc-infobristolacuk->

Could you host a fourth year student from St. George's, London? This is a graduate entry medical course which is delivered in Cyprus. **Read more on page 2**

MB21 Year 3 is coming on stream in 2019-20 32 Primary Care sessions
Would you and your practice like to be part of this exciting change? We are offering three Year 3 workshops in different locations to bring you up to speed with the changes.
More about Year 3 on pages 2-4

Inaugural Lecture of Professor Trevor Thompson 22nd March, 6.15 pm

Professor of Primary Care Education, University of Bristol

Between routine practice and complete chaos there is a lively edge land of uncertainty – mind and body, organic and functional, science and art, person and planet. In this talk I share Bristol's pioneering approaches to medical education, as we strive to bring coherence to complexity. **Page 2**

distrACT

This app has been developed by local GP Knut Schroeder, GP colleagues, Bristol medical students and UWE students. It is aimed at young people who are **self-harming**. It is available from the NHS Apps Library <https://www.nhs.uk/apps-library/distract/>

3/2019

Primary Health Care
<http://www.bristol.ac.uk/primaryhealthcare>



Would you like to host a fourth year student from St. George's, London, graduate entry programme in Cyprus?



My name is **Zara Toney** and I'm a penultimate year medical student at St George's University (London), on their graduate entry programme delivered in Cyprus. I am looking for a potential GP practice to host me for a 5 week clinical student selected component (similar to an elective) at the beginning of 2020. Tentative dates: 6 Jan 2020 - 10th Feb 2020. I have a strong interest in general practice and public health. My background is laboratory based through my biomedical science degree, research projects, as well as experience working in the pharmaceutical industry and the corporate world during a placement year, plus interruption of studies. The GP practice would ideally need to be in Bristol/Weston area (or a reasonable further distance) as my accommodation will be in Weston-Super-Mare. I am happy to be supervised by one clinician or have one clinician that I report to, but rotate between available doctors throughout the placement. Unfortunately, no remuneration will be available for the hosting site.

Please email phc-teaching@bristol.ac.uk if you are interested in hosting Zara. We will put you in touch with Zara.

Inaugural Lecture of Professor Trevor Thompson

Professor of Primary Care Education, University of Bristol

Title "Out Of Our Heads! Learning Medicine at the Edge."

Location: Reception Room, **Wills Memorial Building**, Bristol BS8 1RL

Time: **6.15pm Fri. 22nd March**. Duration ~ 60min. followed by drinks reception to~8pm.

Reserve a place on **Eventbrite** [here](#) - the event is open to the public and, of course, free. Between routine practice and complete chaos there is a lively edge land of uncertainty – mind and body, organic and functional, science and art, person and planet. In this talk I share Bristol's pioneering approaches to medical education, as we strive to bring coherence to complexity.



MB21 Year 3 coming on stream in 2019-20

We are very excited to be able to reveal more detail about year 3 MB21!

Starting in **September 2019**, year 3 medical students will get **32 sessions of general practice** - significantly more than the current 8. The style of teaching also represents a change from previous years. We have tried to build on the strengths of the current year 3 whilst introducing new elements such as consulting with 'undifferentiated' patients, a 'simulated surgery', and workshops which will include observed history taking and examination with patients, as well as elements such as a 'skill of the week'.

Here is a **Quick Reference Guide** that gives you more detail about MB21 year 3, including the [teaching dates for year 3 in the 2019-20 academic year](#). As we continue to develop year 3 MB21 we will add further information to the year 3 MB21 page of the website

<https://www.bristol.ac.uk/primaryhealthcare/teaching/mb21-curriculum-review/year-3-mb21/>

We are planning to start recruiting practices in late Spring 2019

We're really excited about our new programme of teaching in the community, and owe a big debt of thanks to all the current year 3 GP teachers and students who have been involved in the development of this so far. As always, it's great to be part of such an enthusiastic community of teachers!

Simon Thornton and Ciaran Conway Year 3 MB21 Co-leads

Year 3 General Practice Placement

Quick Reference Guide

For more information on each year, visit our website: <https://www.bristol.ac.uk/primaryhealthcare/teaching/>

GP3

.....

In year 3, students have 16 days in general practice on Tuesdays. This placement consists of two blocks, each of eight whole days in a practice. Each day in practice is themed, linking closely with student's learning in secondary care. At the end of each placement, students will take part in a 'simulated surgery' at the local academy, facilitated by the GP.

.....

How the placement works

Each day in practice is split into a workshop in the morning with 6 students, facilitated by the GP teacher. In the afternoon, two students take part in a teaching surgery and the other four students undertake their People, Populations and Practices (PPP) project.

Workshops

Each workshop is themed and has a detailed tutorial guide. As part of each workshop, we would expect you to bring at least one patient in relevant to that day's theme.

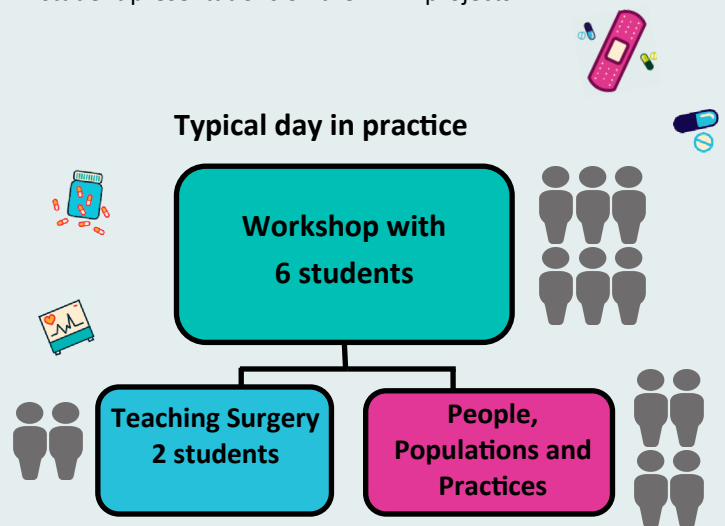


Suggested Summary Timetable	
08:30 -10:00	GP Preparation time
10:00 -13:00	Workshop
14:00 -17:00	Teaching surgery/PPP

Academy Day

On the final day of each block, students will take part in a simulated surgery at the academy. The GP tutors will help facilitate the session. After lunch there will be a series of brief student presentations on their PPP projects.

Typical day in practice



Year 3 Key Facts

- Tuesdays
- 16 days over the year
- 6 students per group
- £600-£650 per day



Teaching surgery

Two students will join you for the teaching surgery. These should be unselected patients and an opportunity for the students to practice their consultation skills. We would like each student to consult a minimum of two times during each surgery so suggest x4 30 minutes appointments.

.....

People, Practices and Populations (PPP)

The four students who aren't doing the teaching surgery will be doing PPP. We would like you to select a patient per pair of students for them to follow. They will visit at the start and end of the placement and in the time between will need access to two computers to review the patient records and access online teaching resources as pairs.



Payment and packages

For teaching one block, the payment is £600 per day (£4,800 for the 8 day block). If your practice signs up to our Year 3 Teaching Package to deliver all 16 days (both Block A and B), the payment is £650 per day (£10,400 per placement). Different GPs can supervise Blocks A and B. For more information on packages, please see the CAPC Teaching website.



Teaching Dates and Topics

2019-20

Block A		
Week	Date	Topic
1	17-Sep-19	Cardiovascular
2	1-Oct-19	Gastrointestinal 1
3	15-Oct-19	Neurology
4	29-Oct-19	Renal
5	12-Nov-19	Musculoskeletal 1
6	26-Nov-19	Ophthalmology and ENT
7	10-Dec-19	Emergencies in General Practice
8	7-Jan-20	Academy Day

Block B		
Week	Date	Topic
9	28-Jan-20	Respiratory
10	11-Feb-20	Gastrointestinal 2
11	25-Feb-20	Urology
12	10-Mar-20	Musculoskeletal 2
13	24-Mar-20	Dermatology
14	21-Apr-20	Gynaecology and Breast
15	5-May-20	Endocrine
16	19-May-20	Academy Day

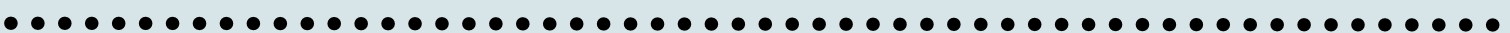


'Brother and Sister' by Sarah Wake, Year 1 Medical Student

Teacher Development
Year 3 Workshop TBC

Key
Practice based day
Academy Day

Year 3 Frequently asked questions	
Can more than one GP deliver the teaching?	Yes, although we would prefer no more than two regular teachers per block.
Can I change the timings of the day?	You can arrange this with the students. They must still receive a three hour workshop and further three hours of teaching surgery and check-in/out.
If I have a GP trainee, can they help?	Yes, we are inviting GP trainees to help facilitate the simulated surgery. They could also facilitate the morning workshops for one block.
Will material for the workshop be provided?	Yes, we will provide detailed material for running the workshop. Think of it as following a recipe, but feel free to innovate if you have your own ideas!



Severn Gala Dinner

Gala dinner speaker **Dr Marian Davis**, GP

'Adolescents' health in vulnerable populations'

7 June 2019 (evening) Aztec Spa Hotel, Aztec West, Bristol

Booking url: <https://rcgpportal.force.com/s/lt->



7 JUNE 2019 GALA DINNER & GALE LECTURE

This annual evening social and networking event will take place at the Aztec Hotel & Spa in Bristol and will include a welcome drink followed by a two course buffet dinner with drinks and an inspiring Gale Lecture entitled "Adolescents' health in vulnerable populations" from guest speaker, Dr Marian Davis, a GP from Herefordshire, Chair of RCGP Adolescent Health Group and RCGP Member of Advisory Council AYPH.

email for more info: severn@rcgp.org.uk



Royal College of
General Practitioners

SEVERN FACULTY

**Severn Faculty
RCGP Gala Dinner
2019 including Gale
after dinner lecture
from
Dr Marian Davis**

7 June 2019

**Aztec Hotel & Spa
Aztec West
Almondsbury Bristol
BS32 4TS**

**Book now via our
online system see
website for booking
link**

RCGP Members £40

**Non-Members & Guests
£45**

**AiTs, Foundation Doctors
& Medical Students £35**

**Bookings close on
29 May 2019**